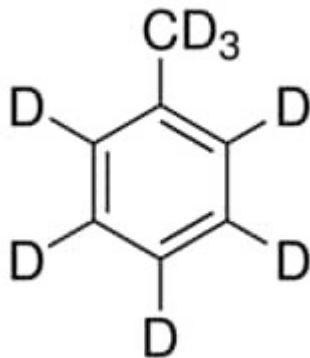


TOLUENE-D8 99.6 atom % D 10X.75 ML Aldrich

Codice Articolo: 434388-10X0.75M

Breve descrizione del prodotto:

Toluene-d8, 99.6 atom % D

Informazioni aggiuntive:

- CAS Number: 2037-26-5
- Molecular Formula: C₇H₈
- Purity Grade: 99.6 atom % D
- URL Link: <https://www.sigmaaldrich.com/US/en/product/ALDRICH/434388?context=product>
- Image
URL: https://www.sigmaaldrich.com/content/dam/sigma-aldrich/structure7/049/mfcd00044638.eps/_jcr_content/renditions/mfcd00044638-medium.png
- MSDS
Link: <https://www.sigmaaldrich.com/MSDS/MSDS/DisplayMSDSPage.do?country=DE&language=EN&productNumber=434388&brand=ALDRICH>
- Molecular Weight: 100.19
- Shipped on ICE/no ICE: STD
- SAP Pack with Pack Qty: 10X0.75ML
- Prodotto padre: 434388-10X0.75M