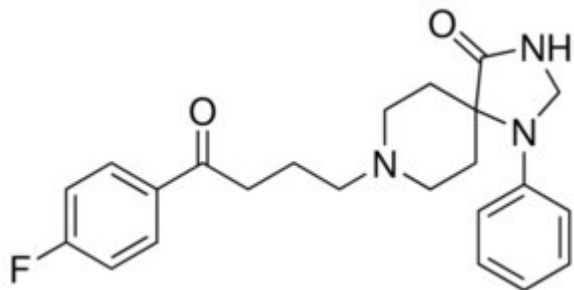


## Spiperone solid 250 mg Sigma-Aldrich



**Codice Articolo:** S7395-250MG

### Breve descrizione del prodotto:

Spiperone, solid

### Informazioni aggiuntive:

- CAS Number: 749-02-0
- Molecular Formula: C<sub>23</sub>H<sub>26</sub>N<sub>3</sub>O<sub>2</sub>
- Purity Grade: solid
- URL Link: <https://www.sigmaaldrich.com/US/en/product/SIGMA/S7395?context=product>
- Image  
URL: [https://www.sigmaaldrich.com/content/dam/sigma-aldrich/structure0/132/mfcd00055099.eps/\\_jcr\\_content/renditions/mfcd00055099-medium.png](https://www.sigmaaldrich.com/content/dam/sigma-aldrich/structure0/132/mfcd00055099.eps/_jcr_content/renditions/mfcd00055099-medium.png)
- MSDS  
Link: <https://www.sigmaaldrich.com/MSDS/MSDS/DisplayMSDSPage.do?country=DE&language=EN&productNumber=S7395&brand=SIGMA>
- Molecular Weight: 395.47
- Shipped on ICE/no ICE: STD
- SAP Pack with Pack Qty: 1X250MG
- Prodotto padre: S7395-250MG