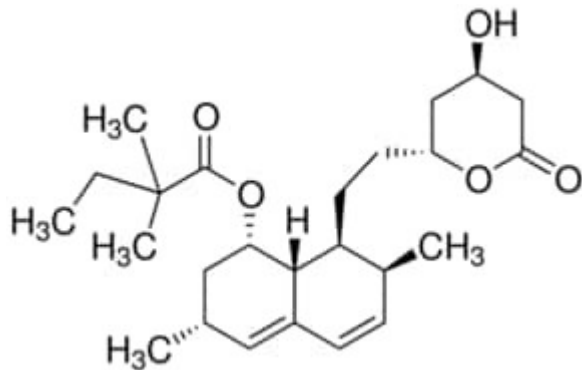


## Simvastatin 10 mg SUPELCO analytical standard



**Codice Articolo:** 38956-10MG

### Breve descrizione del prodotto:

Simvastatin, analytical standard

### Informazioni aggiuntive:

- CAS Number: 79902-63-9
- Molecular Formula: C<sub>25</sub>H<sub>38</sub>O<sub>5</sub>
- Purity Grade: analytical standard
- URL Link: <https://www.sigmaaldrich.com/US/en/product/SIAL/38956?context=product>
- Image  
URL: [https://www.sigmaaldrich.com/content/dam/sigma-aldrich/structure8/134/mfcd00072007.eps/\\_jcr\\_content/renditions/mfcd00072007-medium.png](https://www.sigmaaldrich.com/content/dam/sigma-aldrich/structure8/134/mfcd00072007.eps/_jcr_content/renditions/mfcd00072007-medium.png)
- MSDS  
Link: <https://www.sigmaaldrich.com/MSDS/MSDS/DisplayMSDSPage.do?country=DE&language=EN&productNumber=38956&brand=SIAL>
- Molecular Weight: 418.57
- Shipped on ICE/no ICE: STD
- SAP Pack with Pack Qty: 1X10MG
- Storage Temperature: -2-8°C
- Prodotto padre: 38956-10MG