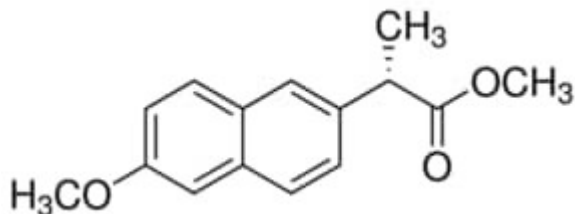


(S)-Naproxen methyl ester >=98.0% 50 mg Sigma-Aldrich

Codice Articolo: 80822-50MG

Breve descrizione del prodotto:

(S)-Naproxen methyl ester, pharmaceutical impurity standard

Informazioni aggiuntive:

- CAS Number: 26159-35-3
- Molecular Formula: C₁₅H₁₆O₃
- Purity Grade: pharmaceutical impurity standard
- URL Link: <https://www.sigmaaldrich.com/US/en/product/SIAL/80822?context=product>
- Image
URL: https://www.sigmaaldrich.com/content/dam/sigma-aldrich/structure6/109/mfcd12031841.eps/_jcr_content/renditions/mfcd12031841-medium.png
- MSDS
Link: <https://www.sigmaaldrich.com/MSDS/MSDS/DisplayMSDSPage.do?country=DE&language=EN&productNumber=80822&brand=SIAL>
- Molecular Weight: 244.29
- Shipped on ICE/no ICE: STD
- SAP Pack with Pack Qty: 1X50MG
- Storage Temperature: -2-8°C
- Prodotto padre: 80822-50MG