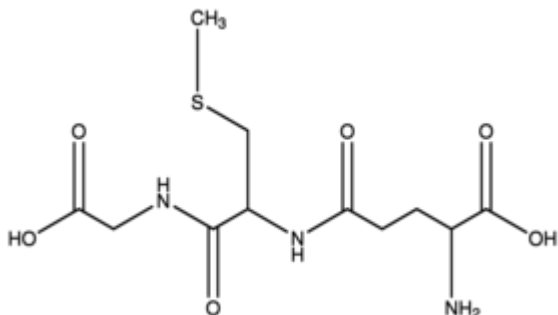


## S-Methylglutathione 100 mg Sigma



**Codice Articolo:** M4139-100MG

### Breve descrizione del prodotto:

S-Methylglutathione,

### Informazioni aggiuntive:

- CAS Number: 2922-56-7
- Molecular Formula: C<sub>11</sub>H<sub>19</sub>N<sub>3</sub>O<sub>6</sub>S
- URL Link: <https://www.sigmaaldrich.com/US/en/product/SIGMA/M4139?context=product>
- Image  
URL: [https://www.sigmaaldrich.com/content/dam/sigma-aldrich/structure5/132/mfcd00056730.eps/\\_jcr\\_content/renditions/mfcd00056730-medium.png](https://www.sigmaaldrich.com/content/dam/sigma-aldrich/structure5/132/mfcd00056730.eps/_jcr_content/renditions/mfcd00056730-medium.png)
- MSDS  
Link: <https://www.sigmaaldrich.com/MSDS/MSDS/DisplayMSDSPage.do?country=DE&language=EN&productNumber=M4139&brand=SIGMA>
- Molecular Weight: 321.35
- Shipped on ICE/no ICE: STD
- SAP Pack with Pack Qty: 1X100MG
- Storage Temperature: -2-8°C
- Prodotto padre: M4139-100MG