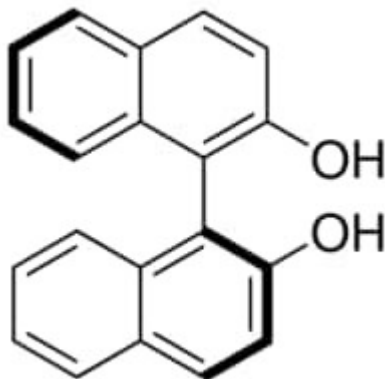


**(S)-(-)-1,1'-Bi(2-naphthol) 99% 25 g Sigma-Aldrich**

**Codice Articolo:** 246956-25G

**Breve descrizione del prodotto:**

(S)-(-)-1,1'-Bi(2-naphthol),99%

**Informazioni aggiuntive:**

- CAS Number: 18531-99-2
- Molecular Formula: C<sub>20</sub>H<sub>14</sub>O<sub>2</sub>
- Purity Grade: 99%
- URL Link: <https://www.sigmaaldrich.com/US/en/product/ALDRICH/246956?context=product>
- Image  
URL: [https://www.sigmaaldrich.com/content/dam/sigma-aldrich/structure8/055/a\\_\\_\\_\\_246956.eps/\\_jcr\\_content/renditions/a\\_\\_\\_\\_246956-medium.png](https://www.sigmaaldrich.com/content/dam/sigma-aldrich/structure8/055/a____246956.eps/_jcr_content/renditions/a____246956-medium.png)
- MSDS  
Link: <https://www.sigmaaldrich.com/MSDS/MSDS/DisplayMSDSPage.do?country=DE&language=EN&productNumber=246956&brand=ALDRICH>
- Molecular Weight: 286.32
- Shipped on ICE/no ICE: STD
- SAP Pack with Pack Qty: 1X25G
- Prodotto padre: 246956-25G