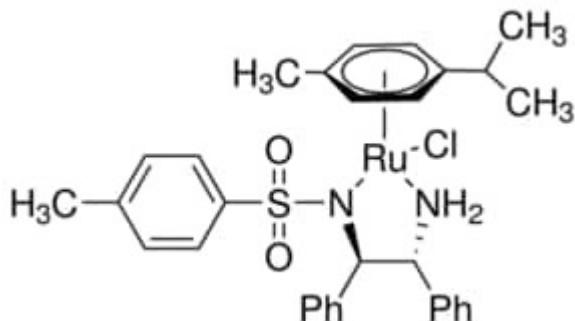


## RuCl(p-cymene)[(R,R)-Ts-DPEN] 500 mg Aldrich



**Codice Articolo:** 703907-500MG

### Breve descrizione del prodotto:

RuCl(p-cymene)[(R,R)-Ts-DPEN],

### Informazioni aggiuntive:

- CAS Number: 192139-92-7
- Molecular Formula: C<sub>31</sub>H<sub>35</sub>ClN<sub>2</sub>O<sub>2</sub>RuS
- URL Link: <https://www.sigmaaldrich.com/US/en/product/ALDRICH/703907?context=product>
- Image  
URL: [https://www.sigmaaldrich.com/content/dam/sigma-aldrich/structure1/177/mfcd10567385.eps/\\_jcr\\_content/renditions/mfcd10567385-medium.png](https://www.sigmaaldrich.com/content/dam/sigma-aldrich/structure1/177/mfcd10567385.eps/_jcr_content/renditions/mfcd10567385-medium.png)
- MSDS  
Link: <https://www.sigmaaldrich.com/MSDS/MSDS/DisplayMSDSPage.do?country=DE&language=EN&productNumber=703907&brand=ALDRICH>
- Molecular Weight: 636.21
- Shipped on ICE/no ICE: STD
- SAP Pack with Pack Qty: 1X500MG
- Storage Temperature: -2-8°C
- Prodotto padre: 703907-500MG