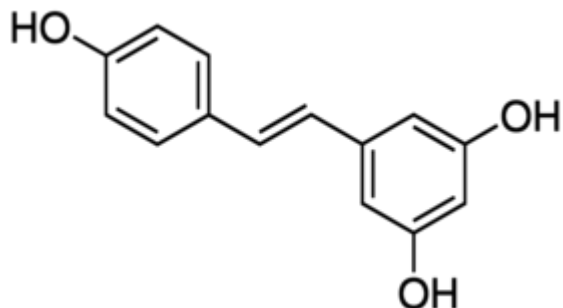


RESVERATROL 100 MG SIGMA



Codice Articolo: 76511-100MG

Breve descrizione del prodotto:

Resveratrol, certified reference material, TraceCERT, Manufactured by: Sigma-Aldrich Production GmbH, Switzerland

Informazioni aggiuntive:

- CAS Number: 501-36-0
- Molecular Formula: C₁₄H₁₂O₃
- Purity Grade: certified reference material, TraceCERT(R)
- URL Link: <https://www.sigmaaldrich.com/US/en/product/SIAL/76511?context=product>
- Image
URL: https://www.sigmaaldrich.com/content/dam/sigma-aldrich/structure2/123/mfcd00133799.eps/_jcr_content/renditions/mfcd00133799-medium.png
- MSDS
Link: <https://www.sigmaaldrich.com/MSDS/MSDS/DisplayMSDSPage.do?country=DE&language=EN&productNumber=76511&brand=SIAL>
- Molecular Weight: 228.24
- Shipped on ICE/no ICE: STD
- SAP Pack with Pack Qty: 1X100MG
- Storage Temperature: -2-8°C
- Prodotto padre: 76511-100MG