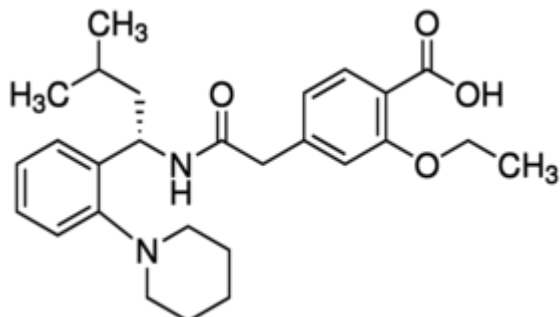


Repaglinide $\geq 98\%$ (HPLC), solid 50 mg



Codice Articolo: R9028-50MG

Breve descrizione del prodotto:

Repaglinide, $\geq 98\%$ (HPLC), solid

Informazioni aggiuntive:

- CAS Number: 135062-02-1
- Molecular Formula: C₂₇H₃₆N₂O₄
- Purity Grade: $\geq 98\%$ (HPLC), solid
- URL Link: <https://www.sigmaaldrich.com/US/en/product/SIGMA/R9028?context=product>
- Image
URL: https://www.sigmaaldrich.com/content/dam/sigma-aldrich/structure6/007/mfcd00906179.eps/_jcr_content/renditions/mfcd00906179-medium.png
- MSDS
Link: <https://www.sigmaaldrich.com/MSDS/MSDS/DisplayMSDSPage.do?country=DE&language=EN&productNumber=R9028&brand=SIGMA>
- Molecular Weight: 452.59
- Shipped on ICE/no ICE: STD
- SAP Pack with Pack Qty: 1X50MG
- Storage Temperature: -2-8°C
- Prodotto padre: R9028-50MG