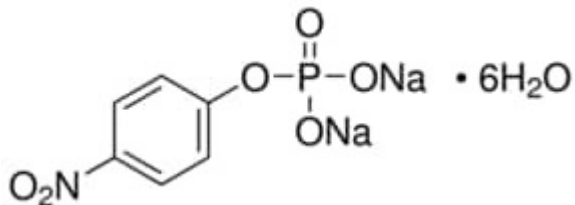


Phosphatase substrate 200 tablets SIGMA



Codice Articolo: S0942-200TAB

Breve descrizione del prodotto:

Phosphatase substrate, 5 mg tablets

Informazioni aggiuntive:

- CAS Number: 333338-18-4
- Molecular Formula: C₆H₄NNa₂O₆P
- Purity Grade: 5 mg tablets
- URL Link: <https://www.sigmaaldrich.com/US/en/product/SIGMA/S0942?context=product>
- Image
URL: https://www.sigmaaldrich.com/content/dam/sigma-aldrich/structure4/083/mfcd00066288.eps/_jcr_content/renditions/mfcd00066288-medium.png
- MSDS
Link: <https://www.sigmaaldrich.com/MSDS/MSDS/DisplayMSDSPage.do?country=DE&language=EN&productNumber=S0942&brand=SIGMA>
- Molecular Weight: 371.14
- Shipped on ICE/no ICE: STD
- SAP Pack with Pack Qty: 1X200TAB
- Storage Temperature: -20C
- Prodotto padre: S0942-200TAB