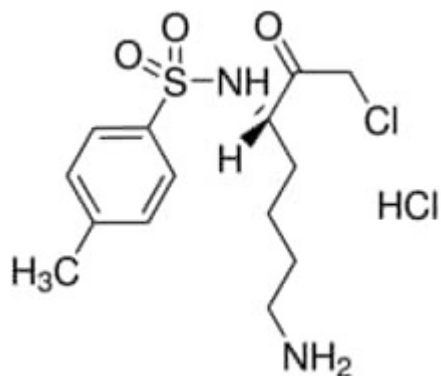


Na-Tosyl-L-lysine chloromethyl ketone hydrochloride 100mg Sigma-Aldrich



Codice Articolo: 90182-100MG

Breve descrizione del prodotto:

Na-Tosyl-L-lysine chloromethyl ketone hydrochloride, $\geq 99.0\%$ (AT)

Informazioni aggiuntive:

- CAS Number: 4272-74-6
- Molecular Formula: C₁₄H₂₁ClN₂O₃S
- Purity Grade: $\geq 99.0\%$ (AT)
- URL Link: <https://www.sigmaaldrich.com/US/en/product/SIGMA/90182?context=product>
- Image
URL: https://www.sigmaaldrich.com/content/dam/sigma-aldrich/structure4/158/mfcd00065395.eps/_jcr_content/renditions/mfcd00065395-medium.png
- MSDS
Link: <https://www.sigmaaldrich.com/MSDS/MSDS/DisplayMSDSPage.do?country=DE&language=EN&productNumber=90182&brand=SIGMA>
- Molecular Weight: 369.31
- Shipped on ICE/no ICE: STD
- SAP Pack with Pack Qty: 1X100MG
- Storage Temperature: -20C
- Prodotto padre: 90182-100MG