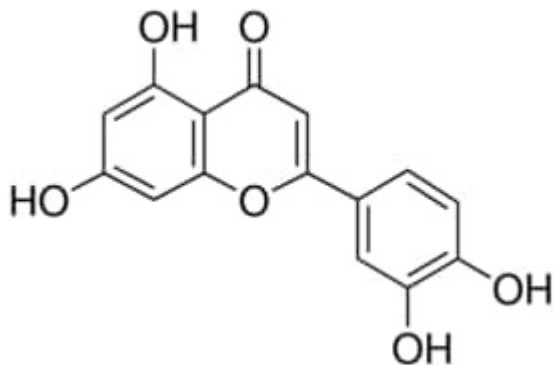


## LUTEOLIN 10 MG analytical standard Sigma-Aldrich



**Codice Articolo:** 72511-10MG

### Breve descrizione del prodotto:

Luteolin, analytical standard

### Informazioni aggiuntive:

- CAS Number: 491-70-3
- Molecular Formula: C<sub>15</sub>H<sub>10</sub>O<sub>6</sub>
- Purity Grade: analytical standard
- URL Link: <https://www.sigmaaldrich.com/US/en/product/SIAL/72511?context=product>
- Image  
URL: [https://www.sigmaaldrich.com/content/dam/sigma-aldrich/structure6/175/mfcd00017309.eps/\\_jcr\\_content/renditions/mfcd00017309-medium.png](https://www.sigmaaldrich.com/content/dam/sigma-aldrich/structure6/175/mfcd00017309.eps/_jcr_content/renditions/mfcd00017309-medium.png)
- MSDS  
Link: <https://www.sigmaaldrich.com/MSDS/MSDS/DisplayMSDSPage.do?country=DE&language=EN&productNumber=72511&brand=SIAL>
- Molecular Weight: 286.24
- Shipped on ICE/no ICE: WICE
- SAP Pack with Pack Qty: 1X10MG
- Storage Temperature: -2-8°C
- Prodotto padre: 72511-10MG