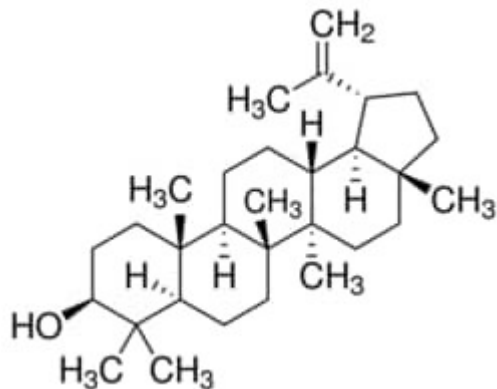


## Lupeol10 mg analytical standard Sigma-Aldrich



**Codice Articolo:** 18692-10MG

### Breve descrizione del prodotto:

Lupeol, analytical standard

### Informazioni aggiuntive:

- CAS Number: 545-47-1
- Molecular Formula: C<sub>30</sub>H<sub>50</sub>
- Purity Grade: analytical standard
- URL Link: <https://www.sigmaaldrich.com/US/en/product/SIAL/18692?context=product>
- Image  
URL: [https://www.sigmaaldrich.com/content/dam/sigma-aldrich/structure3/193/mfcd00017351.eps/\\_jcr\\_content/renditions/mfcd00017351-medium.png](https://www.sigmaaldrich.com/content/dam/sigma-aldrich/structure3/193/mfcd00017351.eps/_jcr_content/renditions/mfcd00017351-medium.png)
- MSDS  
Link: <https://www.sigmaaldrich.com/MSDS/MSDS/DisplayMSDSPage.do?country=DE&language=EN&productNumber=18692&brand=SIAL>
- Molecular Weight: 426.72
- Shipped on ICE/no ICE: STD
- SAP Pack with Pack Qty: 1X10MG
- Storage Temperature: -2-8°C
- Prodotto padre: 18692-10MG