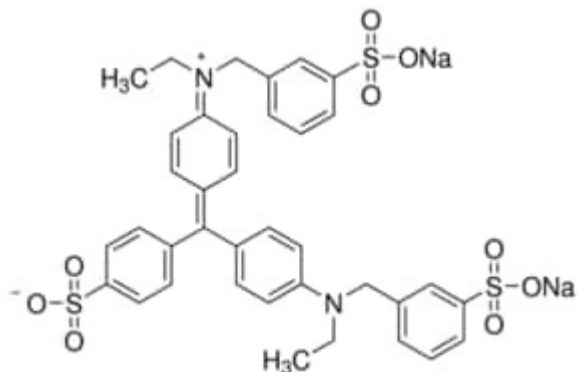


## Light Green SF Yellowish 10 g SIGMA-ALDR ICH



**Codice Articolo:** L5382-10G

### Breve descrizione del prodotto:

Light Green SF yellowish, powder or crystals

### Informazioni aggiuntive:

- CAS Number: 5141-20-8
- Molecular Formula: C<sub>37</sub>H<sub>34</sub>N<sub>2</sub>Na<sub>2</sub>O<sub>9</sub>S<sub>3</sub>
- Purity Grade: crystalline
- URL Link: <https://www.sigmaaldrich.com/US/en/product/SIAL/L5382?context=product>
- Image  
URL: [https://www.sigmaaldrich.com/content/dam/sigma-aldrich/structure9/181/mfcd00012121.eps/\\_jcr\\_content/renditions/mfcd00012121-medium.png](https://www.sigmaaldrich.com/content/dam/sigma-aldrich/structure9/181/mfcd00012121.eps/_jcr_content/renditions/mfcd00012121-medium.png)
- MSDS  
Link: <https://www.sigmaaldrich.com/MSDS/MSDS/DisplayMSDSPage.do?country=DE&language=EN&productNumber=L5382&brand=SIAL>
- Molecular Weight: 792.85
- Shipped on ICE/no ICE: STD
- SAP Pack with Pack Qty: 1X10G
- Storage Temperature: room temp
- Prodotto padre: L5382-10G