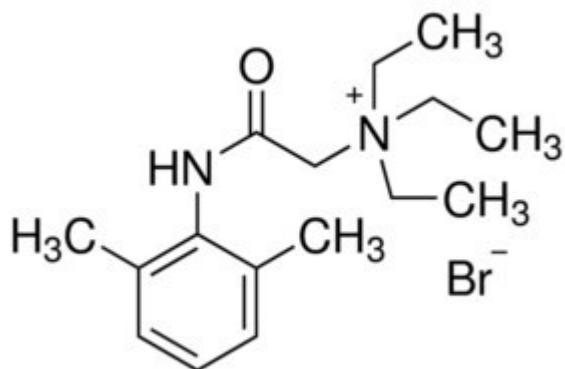


Lidocaine N-ethyl bromide 250 mg SUPELCO analytical standard for drug analysis



Codice Articolo: L5783-250MG

Breve descrizione del prodotto:

Lidocaine N-ethyl bromide, analytical standard, for drug analysis

Informazioni aggiuntive:

- CAS Number: 21306-56-9
- Molecular Formula: C₁₆H₂₇BrN₂O
- Purity Grade: analytical standard, for drug analysis
- URL Link: <https://www.sigmaaldrich.com/US/en/product/SIAL/L5783?context=product>
- Image
URL: https://www.sigmaaldrich.com/content/dam/sigma-aldrich/structure2/182/mfcd00083182.eps/_jcr_content/renditions/mfcd00083182-medium.png
- MSDS
Link: <https://www.sigmaaldrich.com/MSDS/MSDS/DisplayMSDSPage.do?country=DE&language=EN&productNumber=L5783&brand=SIAL>
- Molecular Weight: 343.30
- Shipped on ICE/no ICE: STD
- SAP Pack with Pack Qty: 1X250MG
- Prodotto padre: L5783-250MG