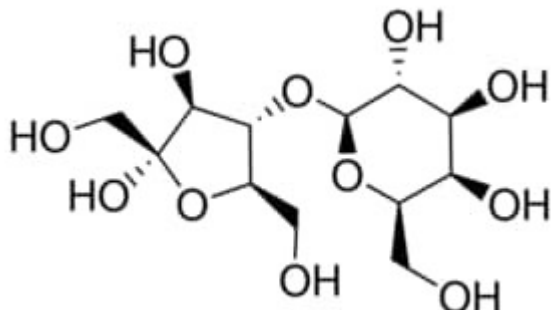


## Lactulose EP Reference Standard Sigma-Aldrich



**Codice Articolo:** L0130000

### Breve descrizione del prodotto:

Lactulose, European Pharmacopoeia (EP) Reference Standard

### Informazioni aggiuntive:

- CAS Number: 4618-18-2
- Molecular Formula: C<sub>12</sub>H<sub>22</sub>O<sub>11</sub>
- Purity Grade: European Pharmacopoeia (EP) Reference Standard
- URL Link: <https://www.sigmaaldrich.com/US/en/product/SIAL/L0130000?context=product>
- Image  
URL: [https://www.sigmaaldrich.com/content/dam/sigma-aldrich/structure0/003/mfcd00151469.eps/\\_jcr\\_content/renditions/mfcd00151469-medium.png](https://www.sigmaaldrich.com/content/dam/sigma-aldrich/structure0/003/mfcd00151469.eps/_jcr_content/renditions/mfcd00151469-medium.png)
- MSDS  
Link: <https://www.sigmaaldrich.com/MSDS/MSDS/DisplayMSDSPage.do?country=DE&language=EN&productNumber=L0130000&brand=SIAL>
- Molecular Weight: 342.30
- Shipped on ICE/no ICE: STD
- SAP Pack with Pack Qty: 1X1EA
- Prodotto padre: L0130000