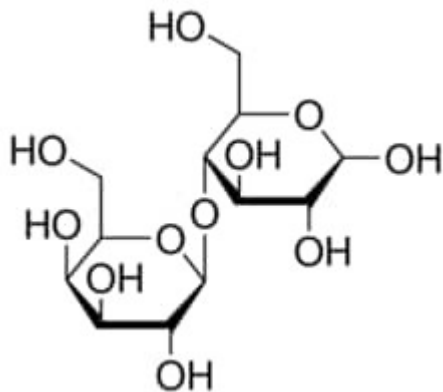


Lactose, Anhydrous 1 g Supelco



Codice Articolo: PHR1025-1G

Breve descrizione del prodotto:

Lactose, Anhydrous, Pharmaceutical Secondary Standard; Certified Reference Material

Informazioni aggiuntive:

- CAS Number: 63-42-3
- Molecular Formula: C₁₂H₂₂O₁₁
- Purity Grade: Pharmaceutical Secondary Standard; Certified Reference Material
- URL Link: <https://www.sigmaaldrich.com/US/en/product/SIAL/PHR1025?context=product>
- Image
URL: https://www.sigmaaldrich.com/content/dam/sigma-aldrich/structure7/124/mfcd00151251.eps/_jcr_content/renditions/mfcd00151251-medium.png
- MSDS
Link: <https://www.sigmaaldrich.com/MSDS/MSDS/DisplayMSDSPage.do?country=DE&language=EN&productNumber=PHR1025&brand=SIAL>
- Molecular Weight: 342.30
- Shipped on ICE/no ICE: STD
- SAP Pack with Pack Qty: 1X1G
- Prodotto padre: PHR1025-1G