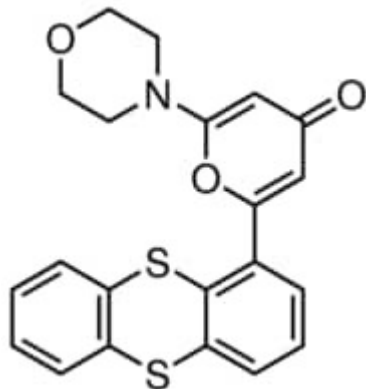


KU-55933 25 mg SIGMA



Codice Articolo: SML1109-25MG

Breve descrizione del prodotto:

KU-55933, >=98% (HPLC)

Informazioni aggiuntive:

- CAS Number: 587871-26-9
- Molecular Formula: C₂₁H₁₇N₃O₃S₂
- Purity Grade: >=98% (HPLC)
- URL Link: <https://www.sigmaaldrich.com/US/en/product/SIGMA/SML1109?context=product>
- Image
URL: https://www.sigmaaldrich.com/content/dam/sigma-aldrich/structure1/176/mfcd08276985.eps/_jcr_content/renditions/mfcd08276985-medium.png
- MSDS
Link: <https://www.sigmaaldrich.com/MSDS/MSDS/DisplayMSDSPage.do?country=DE&language=EN&productNumber=SML1109&brand=SIGMA>
- Molecular Weight: 395.49
- Shipped on ICE/no ICE: STD
- SAP Pack with Pack Qty: 1X25MG
- Storage Temperature: -20C
- Prodotto padre: SML1109-25MG