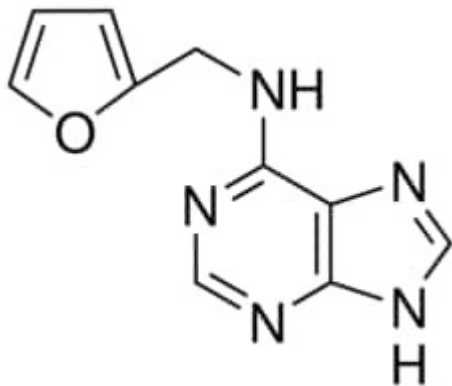


## KINETIN CRYSTALLINE 1 G SIGMA



**Codice Articolo:** K0753-1G

### Breve descrizione del prodotto:

Kinetin, suitable for plant cell culture, crystalline

### Informazioni aggiuntive:

- CAS Number: 525-79-1
- Molecular Formula: CH<sub>9</sub>N<sub>5</sub>O
- Purity Grade: suitable for plant cell culture, crystalline
- URL Link: <https://www.sigmaaldrich.com/US/en/product/SIGMA/K0753?context=product>
- Image  
URL: [https://www.sigmaaldrich.com/content/dam/sigma-aldrich/structure5/107/mfcd00075757.eps/\\_jcr\\_content/renditions/mfcd00075757-medium.png](https://www.sigmaaldrich.com/content/dam/sigma-aldrich/structure5/107/mfcd00075757.eps/_jcr_content/renditions/mfcd00075757-medium.png)
- MSDS  
Link: <https://www.sigmaaldrich.com/MSDS/MSDS/DisplayMSDSPage.do?country=DE&language=EN&productNumber=K0753&brand=SIGMA>
- Molecular Weight: 215.21
- Shipped on ICE/no ICE: STD
- SAP Pack with Pack Qty: 1X1G
- Prodotto padre: K0753-1G