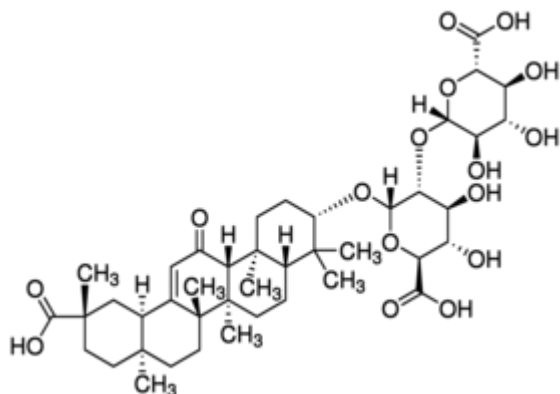


## Glycyrrhizic Acid 200 mg Supelco



**Codice Articolo:** PHR1516-200MG

### Breve descrizione del prodotto:

Glycyrrhizic Acid, Pharmaceutical Secondary Standard; Certified Reference Material

### Informazioni aggiuntive:

- CAS Number: 1405-86-3
- Molecular Formula: C<sub>42</sub>H<sub>62</sub>O<sub>16</sub>
- Purity Grade: Pharmaceutical Secondary Standard; Certified Reference Material
- URL Link: <https://www.sigmaaldrich.com/US/en/product/SIAL/PHR1516?context=product>
- Image  
URL: [https://www.sigmaaldrich.com/content/dam/sigma-aldrich/structure5/084/mfcd00065194.eps/\\_jcr\\_content/renditions/mfcd00065194-medium.png](https://www.sigmaaldrich.com/content/dam/sigma-aldrich/structure5/084/mfcd00065194.eps/_jcr_content/renditions/mfcd00065194-medium.png)
- MSDS  
Link: <https://www.sigmaaldrich.com/MSDS/MSDS/DisplayMSDSPage.do?country=DE&language=EN&productNumber=PHR1516&brand=SIAL>
- Molecular Weight: 822.93
- Shipped on ICE/no ICE: WICE
- SAP Pack with Pack Qty: 1X200MG
- Prodotto padre: PHR1516-200MG