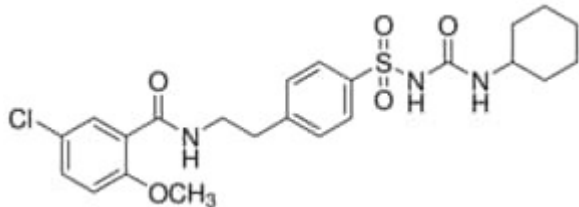


Glyburide (Glibenclamide) 1G Supelco



Codice Articolo: PHR1287-1G

Breve descrizione del prodotto:

Glyburide (Glibenclamide), Pharmaceutical Secondary Standard; Certified Reference Material

Informazioni aggiuntive:

- CAS Number: 10238-21-8
- Molecular Formula: C₂₃H₂₈ClN₃O₅S
- Purity Grade: Pharmaceutical Secondary Standard; Certified Reference Material
- URL Link: <https://www.sigmaaldrich.com/US/en/product/SIAL/PHR1287?context=product>
- Image
URL: https://www.sigmaaldrich.com/content/dam/sigma-aldrich/structure4/192/mfcd00056625.eps/_jcr_content/renditions/mfcd00056625-medium.png
- MSDS
Link: <https://www.sigmaaldrich.com/MSDS/MSDS/DisplayMSDSPage.do?country=DE&language=EN&productNumber=PHR1287&brand=SIAL>
- Molecular Weight: 494.00
- Shipped on ICE/no ICE: STD
- SAP Pack with Pack Qty: 1X1G
- Prodotto padre: PHR1287-1G