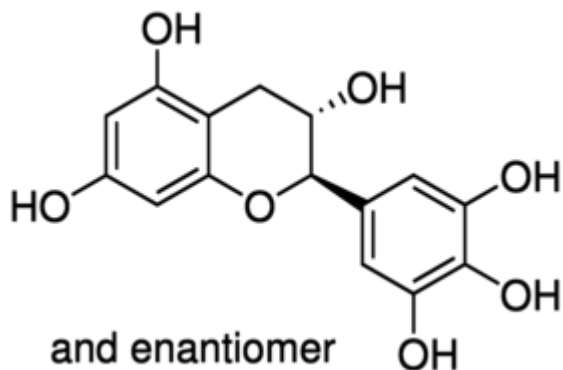


Gallocatechin 10 MG phyproof® Reference Substance



Codice Articolo: PHL80096-10MG

Breve descrizione del prodotto:

Gallocatechin, phyproof Reference Substance

Informazioni aggiuntive:

- CAS Number: 1617-55-6
- Molecular Formula: C₁₅H₁₄O₇
- Purity Grade: phyproof(R) Reference Substance
- URL Link: <https://www.sigmaaldrich.com/US/en/product/SUPELCO/PHL80096?context=product>
- Image
URL: http://www.sigmaaldrich.com/content/dam/sigma-aldrich/structure9/020/mfcd06798946.eps/_jcr_content/renditions/mfcd06798946-medium.png
- MSDS
Link: <https://www.sigmaaldrich.com/MSDS/MSDS/DisplayMSDSPage.do?country=DE&language=EN&productNumber=PHL80096&brand=SUPELCO>
- Molecular Weight: 306.27
- Shipped on ICE/no ICE: WICE
- SAP Pack with Pack Qty: 1X10MG
- Storage Temperature: -2-8°C
- Prodotto padre: PHL80096-10MG