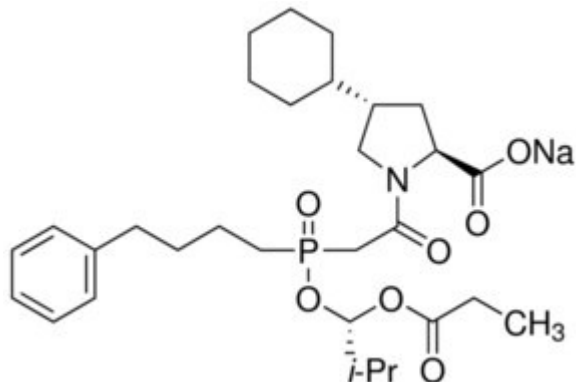


Fosinopril sodium 500 MG SUPELCO



Codice Articolo: PHR3356-500MG

Breve descrizione del prodotto:

Fosinopril sodium, certified reference material, pharmaceutical secondary standard

Informazioni aggiuntive:

- CAS Number: 88889-14-9
- Molecular Formula: C₁₅H₁₄ClNO₂S
- URL Link: <https://www.sigmaaldrich.com/US/en/product/SIAL/PHR3356?context=product>
- Image
URL: http://www.sigmaaldrich.com/content/dam/sigma-aldrich/structure1/038/mfcd23704184.eps/_jcr_content/renditions/mfcd23704184-medium.png
- Molecular Weight: 585.64
- Shipped on ICE/no ICE: +2°C to +8°C
- Storage Temperature: C₃₀H₄₅NO₇P · Na
- Prodotto padre: PHR3356-500MG