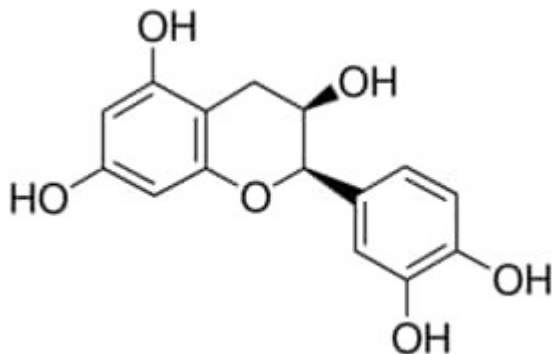


(-)-Epicatechin 20mg phyproof® Reference Substance



Codice Articolo: PHL89192-20MG

Breve descrizione del prodotto:

(-)-Epicatechin, phyproof Reference Substance

Informazioni aggiuntive:

- CAS Number: 490-46-0
- Molecular Formula: C₁₅H₁₄O₆
- Purity Grade: phyproof(R) Reference Substance
- URL Link: <https://www.sigmaaldrich.com/US/en/product/SUPELCO/PHL89192?context=product>
- Image
URL: https://www.sigmaaldrich.com/content/dam/sigma-aldrich/structure0/167/mfcd00075648.eps/_jcr_content/renditions/mfcd00075648-medium.png
- MSDS
Link: <https://www.sigmaaldrich.com/MSDS/MSDS/DisplayMSDSPage.do?country=DE&language=EN&productNumber=PHL89192&brand=SUPELCO>
- Molecular Weight: 290.27
- Shipped on ICE/no ICE: STD
- SAP Pack with Pack Qty: 1X20MG
- Storage Temperature: -2-8°C
- Prodotto padre: PHL89192-20MG