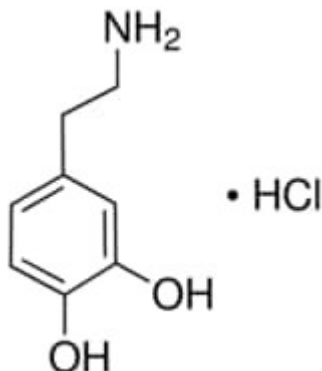


Dopamine hydrochloride 10 g Sigma



Codice Articolo: H8502-10G

Breve descrizione del prodotto:

Dopamine hydrochloride,

Informazioni aggiuntive:

- CAS Number: 62-31-7
- Molecular Formula: C₈H₁₁NO₂
- URL Link: <https://www.sigmaaldrich.com/US/en/product/SIGMA/H8502?context=product>
- Image
URL: https://www.sigmaaldrich.com/content/dam/sigma-aldrich/structure8/166/mfcd00012898.eps/_jcr_content/renditions/mfcd00012898-medium.png
- MSDS
Link: <https://www.sigmaaldrich.com/MSDS/MSDS/DisplayMSDSPage.do?country=DE&language=EN&productNumber=H8502&brand=SIGMA>
- Molecular Weight: 189.64
- Shipped on ICE/no ICE: STD
- SAP Pack with Pack Qty: 1X10G
- Storage Temperature: -2-8°C
- Prodotto padre: H8502-10G