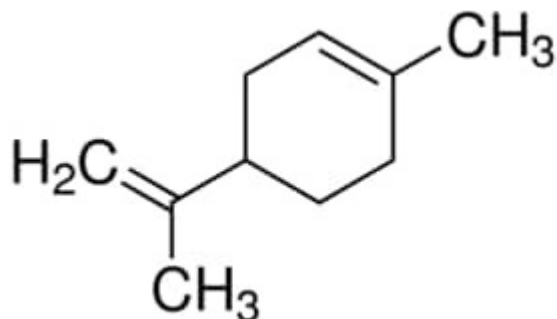


DIPENTENE TECHNICAL GRADE 2 L Aldrich



DIPENTENE TECHNICAL GRADE 2 L Aldrich

Codice Articolo: 334111-1L

Breve descrizione del prodotto:

Dipentene, technical, for use as solvent (for the paint industry), mixture of various terpenes

Informazioni aggiuntive:

- CAS Number: 138-86-3
- Molecular Formula: CH₁₆
- Purity Grade: technical, for use as solvent (for the paint industry), mixture of various terpenes
- URL Link: <https://www.sigmaaldrich.com/US/en/product/ALDRICH/334111?context=product>
- Image
URL: https://www.sigmaaldrich.com/content/dam/sigma-aldrich/structure6/183/mfcd00062992.eps/_jcr_content/renditions/mfcd00062992-medium.png
- MSDS
Link: <https://www.sigmaaldrich.com/MSDS/MSDS/DisplayMSDSPage.do?country=DE&language=EN&productNumber=334111&brand=ALDRICH>
- Molecular Weight: 136.23
- Shipped on ICE/no ICE: STD
- SAP Pack with Pack Qty: 1X1LT
- Prodotto padre: 334111-1L