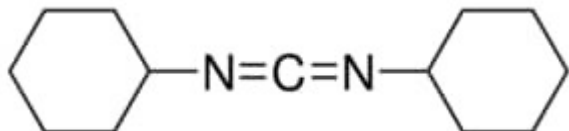


## DCC 99% 100 g Sigma-Aldrich



**Codice Articolo:** D80002-100G

### Breve descrizione del prodotto:

DCC,99%

### Informazioni aggiuntive:

- CAS Number: 538-75-0
- Molecular Formula: C<sub>13</sub>H<sub>22</sub>N<sub>2</sub>
- Purity Grade: 99%
- URL Link: <https://www.sigmaaldrich.com/US/en/product/ALDRICH/D80002?context=product>
- Image  
URL: [https://www.sigmaaldrich.com/content/dam/sigma-aldrich/structure0/013/mfcd00011659.eps/\\_jcr\\_content/renditions/mfcd00011659-medium.png](https://www.sigmaaldrich.com/content/dam/sigma-aldrich/structure0/013/mfcd00011659.eps/_jcr_content/renditions/mfcd00011659-medium.png)
- MSDS  
Link: <https://www.sigmaaldrich.com/MSDS/MSDS/DisplayMSDSPage.do?country=DE&language=EN&productNumber=D80002&brand=ALDRICH>
- Molecular Weight: 206.33
- Shipped on ICE/no ICE: STD
- SAP Pack with Pack Qty: 1X100G
- Prodotto padre: D80002-100G