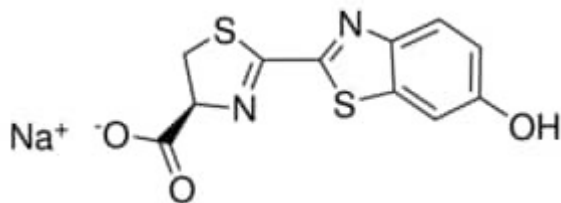


D-Luciferin sodium salt 2 MG Sigma-Aldrich



Codice Articolo: L6882-2MG

Breve descrizione del prodotto:

D-Luciferin sodium salt, lyophilized powder, synthetic

Informazioni aggiuntive:

- CAS Number: 103404-75-7
- Molecular Formula: C₁₁H₇N₂NaO₃S₂
- Purity Grade: lyophilized powder, synthetic
- URL Link: <https://www.sigmaaldrich.com/US/en/product/SIGMA/L6882?context=product>
- Image
URL: https://www.sigmaaldrich.com/content/dam/sigma-aldrich/structure4/060/mfcd00044938.eps/_jcr_content/renditions/mfcd00044938-medium.png
- MSDS
Link: <https://www.sigmaaldrich.com/MSDS/MSDS/DisplayMSDSPage.do?country=DE&language=EN&productNumber=L6882&brand=SIGMA>
- Molecular Weight: 302.30
- Shipped on ICE/no ICE: STD
- SAP Pack with Pack Qty: 1X2MG
- Storage Temperature: -20C
- Prodotto padre: L6882-2MG