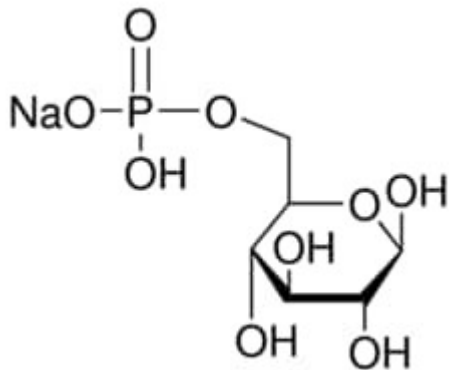


D-GLUCOSE 6-PHOSPHATE SODIUM SALT 500 MG Sigma



Codice Articolo: G7879-500MG

Breve descrizione del prodotto:

D-Glucose 6-phosphate sodium salt, >=98% (HPLC)

Informazioni aggiuntive:

- CAS Number: 54010-71-8
- Molecular Formula: C₆H₁₂NaO₉P
- Purity Grade: crystalline
- URL Link: <https://www.sigmaaldrich.com/US/en/product/SIGMA/G7879?context=product>
- Image
URL: https://www.sigmaaldrich.com/content/dam/sigma-aldrich/structure8/107/mfcd00006611.eps/_jcr_content/renditions/mfcd00006611-medium.png
- MSDS
Link: <https://www.sigmaaldrich.com/MSDS/MSDS/DisplayMSDSPage.do?country=DE&language=EN&productNumber=G7879&brand=SIGMA>
- Molecular Weight: 282.12
- Shipped on ICE/no ICE: STD
- SAP Pack with Pack Qty: 1X500MG
- Prodotto padre: G7879-500MG