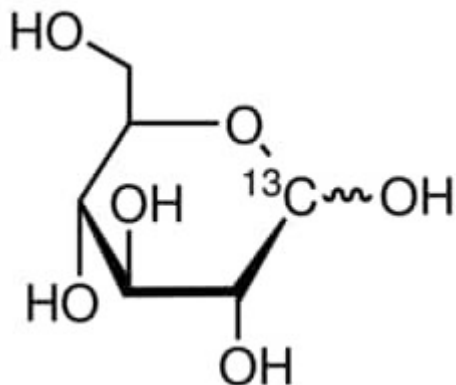


D-GLUCOSE-1-13C 250 MG Aldrich



Codice Articolo: 297046-250MG

Breve descrizione del prodotto:

D-Glucose-1-13C, 99 atom % 13C

Informazioni aggiuntive:

- CAS Number: 40762-22-9
- Molecular Formula: C₆H₁₂O₆
- Purity Grade: 99 atom % 13C
- URL Link: <https://www.sigmaaldrich.com/US/en/product/ALDRICH/297046?context=product>
- Image
URL: https://www.sigmaaldrich.com/content/dam/sigma-aldrich/structure0/096/mfcd00037545.eps/_jcr_content/renditions/mfcd00037545-medium.png
- MSDS
Link: <https://www.sigmaaldrich.com/MSDS/MSDS/DisplayMSDSPage.do?country=DE&language=EN&productNumber=297046&brand=ALDRICH>
- Molecular Weight: 181.15
- Shipped on ICE/no ICE: STD
- SAP Pack with Pack Qty: 1X250MG
- Prodotto padre: 297046-250MG