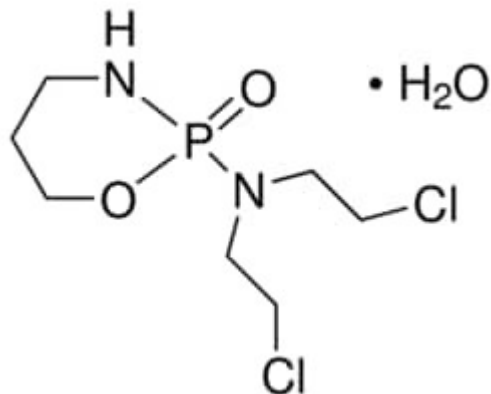


Cyclophosphamide 1 g SIGMA-ALDRICH secondary pharmaceutical standard



Codice Articolo: PHR1404-1G

Breve descrizione del prodotto:

Cyclophosphamide, Pharmaceutical Secondary Standard; Certified Reference Material

Informazioni aggiuntive:

- CAS Number: 6055-19-2
- Molecular Formula: C₇H₁₅Cl₂N₂O₂P
- Purity Grade: Pharmaceutical Secondary Standard; Certified Reference Material
- URL Link: <https://www.sigmaaldrich.com/US/en/product/SIAL/PHR1404?context=product>
- Image
URL: https://www.sigmaaldrich.com/content/dam/sigma-aldrich/structure1/183/mfcd00149395.eps/_jcr_content/renditions/mfcd00149395-medium.png
- MSDS
Link: <https://www.sigmaaldrich.com/MSDS/MSDS/DisplayMSDSPage.do?country=DE&language=EN&productNumber=PHR1404&brand=SIAL>
- Molecular Weight: 279.10
- Shipped on ICE/no ICE: WICE
- SAP Pack with Pack Qty: 1X1G
- Prodotto padre: PHR1404-1G