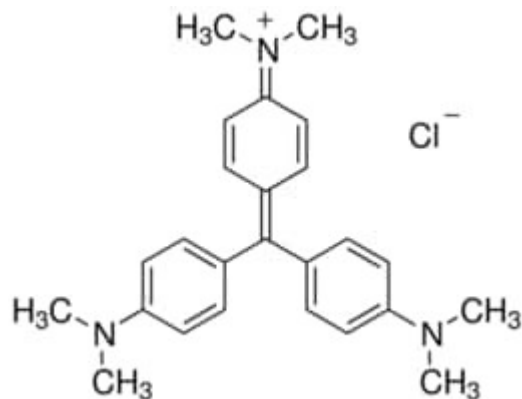


## CRYSTAL VIOLET 25 G Sigma



**Codice Articolo:** C0775-25G

### Breve descrizione del prodotto:

Crystal Violet, certified by the BSC

### Informazioni aggiuntive:

- CAS Number: 548-62-9
- Molecular Formula: C<sub>25</sub>H<sub>3</sub>CIN<sub>3</sub>
- Purity Grade: certified by the Biological Stain Commission
- URL Link: <https://www.sigmaaldrich.com/US/en/product/SIGMA/C0775?context=product>
- Image  
URL: [https://www.sigmaaldrich.com/content/dam/sigma-aldrich/structure0/149/mfcd00011750.eps/\\_jcr\\_content/renditions/mfcd00011750-medium.png](https://www.sigmaaldrich.com/content/dam/sigma-aldrich/structure0/149/mfcd00011750.eps/_jcr_content/renditions/mfcd00011750-medium.png)
- MSDS  
Link: <https://www.sigmaaldrich.com/MSDS/MSDS/DisplayMSDSPage.do?country=DE&language=EN&productNumber=C0775&brand=SIGMA>
- Molecular Weight: 407.98
- Shipped on ICE/no ICE: STD
- SAP Pack with Pack Qty: 1X25G
- Storage Temperature: room temp
- Prodotto padre: C0775-25G