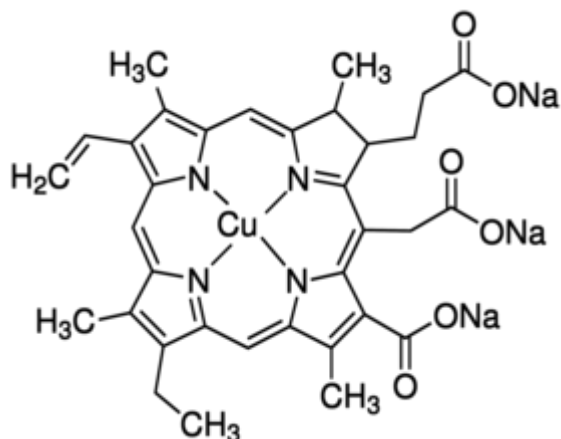


## COPPER CHLOROPHYLLIN 1 G F Pharmaceutical Secondary Standard SUPELCO



**Codice Articolo:** PHR1461-1G

### Breve descrizione del prodotto:

Copper Chlorophyllin, Pharmaceutical Secondary Standard; Certified Reference Material

### Informazioni aggiuntive:

- CAS Number: 11006-34-1
- Molecular Formula: C<sub>34</sub>H<sub>31</sub>CuN<sub>4</sub>Na<sub>3</sub>O<sub>6</sub>
- Purity Grade: Pharmaceutical Secondary Standard; Certified Reference Material
- URL Link: <https://www.sigmaaldrich.com/US/en/product/SIAL/PHR1461?context=product>
- Image  
URL: [https://www.sigmaaldrich.com/content/dam/sigma-aldrich/structure5/111/s\\_\\_\\_\\_c6003.eps/\\_jcr\\_content/renditions/s\\_\\_\\_\\_c6003-medium.png](https://www.sigmaaldrich.com/content/dam/sigma-aldrich/structure5/111/s____c6003.eps/_jcr_content/renditions/s____c6003-medium.png)
- MSDS  
Link: <https://www.sigmaaldrich.com/MSDS/MSDS/DisplayMSDSPage.do?country=DE&language=EN&productNumber=PHR1461&brand=SIAL>
- Molecular Weight: 724.15
- Shipped on ICE/no ICE: WICE
- SAP Pack with Pack Qty: 1X1G
- Prodotto padre: PHR1461-1G