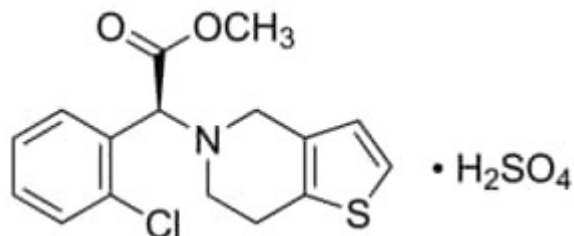


Clopidogrel Bisulfate 1 g pharmaceutical secondary standard



Codice Articolo: PHR1431-1G

Breve descrizione del prodotto:

Clopidogrel Bisulfate, Pharmaceutical Secondary Standard; Certified Reference Material

Informazioni aggiuntive:

- CAS Number: 120202-66-6
- Molecular Formula: C₁₆H₁₆ClNO₂S
- Purity Grade: Pharmaceutical Secondary Standard; Certified Reference Material
- URL Link: <https://www.sigmaaldrich.com/US/en/product/SIAL/PHR1431?context=product>
- Image
URL: https://www.sigmaaldrich.com/content/dam/sigma-aldrich/structure4/005/mfcd00876395.eps/_jcr_content/renditions/mfcd00876395-medium.png
- MSDS
Link: <https://www.sigmaaldrich.com/MSDS/MSDS/DisplayMSDSPage.do?country=DE&language=EN&productNumber=PHR1431&brand=SIAL>
- Molecular Weight: 419.90
- Shipped on ICE/no ICE: WICE
- SAP Pack with Pack Qty: 1X1G
- Prodotto padre: PHR1431-1G