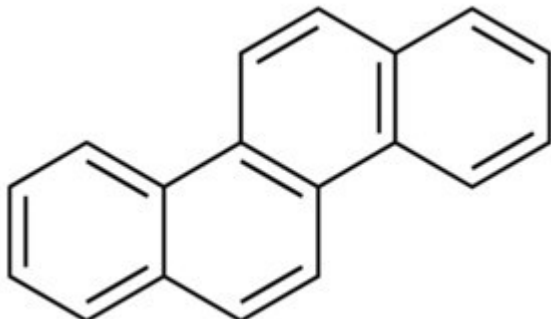


Chrysene 50 mg TraceCERT® Supelco



Codice Articolo: 94035-50MG

Breve descrizione del prodotto:

Chrysene, certified reference material, TraceCERT, Manufactured by: Sigma-Aldrich Production GmbH, Switzerland

Informazioni aggiuntive:

- CAS Number: 218-01-9
- Molecular Formula: C₁₈H₁₂
- Purity Grade: certified reference material, TraceCERT(R)
- URL Link: <https://www.sigmaaldrich.com/US/en/product/SIAL/94035?context=product>
- Image
URL: https://www.sigmaaldrich.com/content/dam/sigma-aldrich/structure2/142/mfcd00003698.eps/_jcr_content/renditions/mfcd00003698-medium.png
- MSDS
Link: <https://www.sigmaaldrich.com/MSDS/MSDS/DisplayMSDSPage.do?country=DE&language=EN&productNumber=94035&brand=SIAL>
- Molecular Weight: 228.29
- Shipped on ICE/no ICE: STD
- SAP Pack with Pack Qty: 1X50MG
- Prodotto padre: 94035-50MG