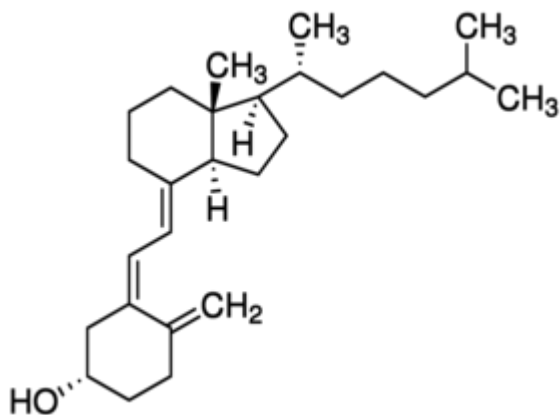


CHOLECALCIFERO 250 MG SIGMA ALDRICH



Codice Articolo: C1357-250MG

Breve descrizione del prodotto:

Cholecalciferol, meets USP testing specifications

Informazioni aggiuntive:

- CAS Number: 67-97-0
- Molecular Formula: C₂₇H₄₄O
- Purity Grade: meets USP testing specifications
- URL Link: <https://www.sigmaaldrich.com/US/en/product/SIAL/C1357?context=product>
- Image
URL: https://www.sigmaaldrich.com/content/dam/sigma-aldrich/structure0/074/mfcd00078131.eps/_jcr_content/renditions/mfcd00078131-medium.png
- MSDS
Link: <https://www.sigmaaldrich.com/MSDS/MSDS/DisplayMSDSPage.do?country=DE&language=EN&productNumber=C1357&brand=SIAL>
- Molecular Weight: 384.64
- Shipped on ICE/no ICE: STD
- SAP Pack with Pack Qty: 1X250MG
- Storage Temperature: -2-8°C
- Prodotto padre: C1357-250MG