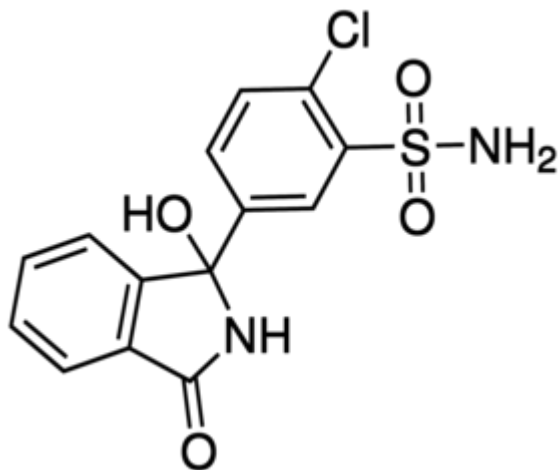


Chlorthalidone (EP) UNIT 150 MG Sigma-Aldrich



Codice Articolo: C1950000

Breve descrizione del prodotto:

Chlorthalidone, European Pharmacopoeia (EP) Reference Standard

Informazioni aggiuntive:

- CAS Number: 77-36-1
- Molecular Formula: C₁₄H₁₁ClN₂O₄S
- Purity Grade: European Pharmacopoeia (EP) Reference Standard
- URL Link: <https://www.sigmaaldrich.com/US/en/product/SIAL/C1950000?context=product>
- Image
URL: https://www.sigmaaldrich.com/content/dam/sigma-aldrich/structure9/023/mfcd00036257.eps/_jcr_content/renditions/mfcd00036257-medium.png
- MSDS
Link: <https://www.sigmaaldrich.com/MSDS/MSDS/DisplayMSDSPage.do?country=DE&language=EN&productNumber=C1950000&brand=SIAL>
- Molecular Weight: 338.77
- Shipped on ICE/no ICE: STD
- SAP Pack with Pack Qty: 1X1EA
- Prodotto padre: C1950000