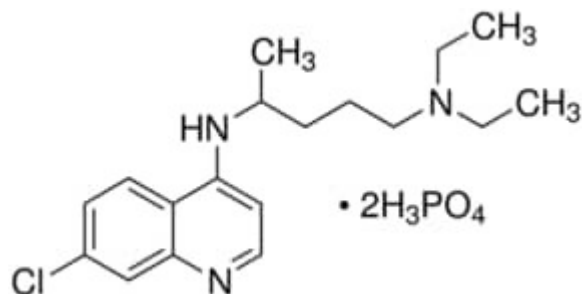


## CHLOROQUIDINE DIPHOSPHATE SALT 98% 25 G SIGMA



**Codice Articolo:** C6628-25G

### Breve descrizione del prodotto:

Chloroquine diphosphate salt, powder or crystals, 98.5-101.0% (EP)

### Informazioni aggiuntive:

- CAS Number: 50-63-5
- Molecular Formula: C<sub>18</sub>H<sub>26</sub>ClN<sub>3</sub>
- Purity Grade: powder or crystals, 98.5-101.0% (EP)
- URL Link: <https://www.sigmaaldrich.com/US/en/product/SIGMA/C6628?context=product>
- Image  
URL: [https://www.sigmaaldrich.com/content/dam/sigma-aldrich/structure0/089/mfcd00069852.eps/\\_jcr\\_content/renditions/mfcd00069852-medium.png](https://www.sigmaaldrich.com/content/dam/sigma-aldrich/structure0/089/mfcd00069852.eps/_jcr_content/renditions/mfcd00069852-medium.png)
- MSDS  
Link: <https://www.sigmaaldrich.com/MSDS/MSDS/DisplayMSDSPage.do?country=DE&language=EN&productNumber=C6628&brand=SIGMA>
- Molecular Weight: 515.86
- Shipped on ICE/no ICE: STD
- SAP Pack with Pack Qty: 1X25G
- Prodotto padre: C6628-25G