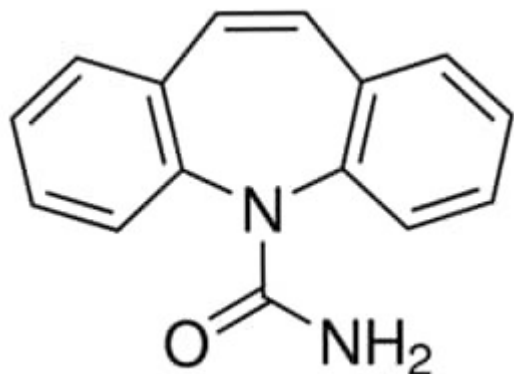


## CARBAMAZEPINE POWDER 25 G SIGMA



**Codice Articolo:** C4024-25G

### Breve descrizione del prodotto:

Carbamazepine, powder

### Informazioni aggiuntive:

- CAS Number: 298-46-4
- Molecular Formula: C<sub>15</sub>H<sub>12</sub>N<sub>2</sub>O
- Purity Grade: powder
- URL Link: <https://www.sigmaaldrich.com/US/en/product/SIGMA/C4024?context=product>
- Image  
URL: [https://www.sigmaaldrich.com/content/dam/sigma-aldrich/structure5/043/mfcd00005073.eps/\\_jcr\\_content/renditions/mfcd00005073-medium.png](https://www.sigmaaldrich.com/content/dam/sigma-aldrich/structure5/043/mfcd00005073.eps/_jcr_content/renditions/mfcd00005073-medium.png)
- MSDS  
Link: <https://www.sigmaaldrich.com/MSDS/MSDS/DisplayMSDSPage.do?country=DE&language=EN&productNumber=C4024&brand=SIGMA>
- Molecular Weight: 236.27
- Shipped on ICE/no ICE: STD
- SAP Pack with Pack Qty: 1X25G
- Storage Temperature: -2-8°C
- Prodotto padre: C4024-25G