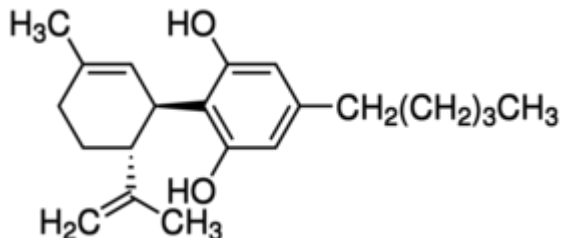


## Cannabidiol phyproof 10 mg



**Codice Articolo:** PHL85705-10MG

### Breve descrizione del prodotto:

Cannabidiol, phyproof Reference Substance

### Informazioni aggiuntive:

- CAS Number: 13956-29-1
- Molecular Formula: C<sub>21</sub>H<sub>30</sub>O<sub>2</sub>
- Purity Grade: phyproof(R) Reference Substance
- URL Link: <https://www.sigmaaldrich.com/US/en/product/SUPELCO/PHL85705?context=product>
- Image  
URL: [https://www.sigmaaldrich.com/content/dam/sigma-aldrich/structure1/095/mfcd04221141.eps/\\_jcr\\_content/renditions/mfcd04221141-medium.png](https://www.sigmaaldrich.com/content/dam/sigma-aldrich/structure1/095/mfcd04221141.eps/_jcr_content/renditions/mfcd04221141-medium.png)
- MSDS  
Link: <https://www.sigmaaldrich.com/MSDS/MSDS/DisplayMSDSPage.do?country=DE&language=EN&productNumber=PHL85705&brand=SUPELCO>
- Molecular Weight: 314.46
- Shipped on ICE/no ICE: STD
- SAP Pack with Pack Qty: 1X10MG
- Storage Temperature: -2-8°C
- Prodotto padre: PHL85705-10MG