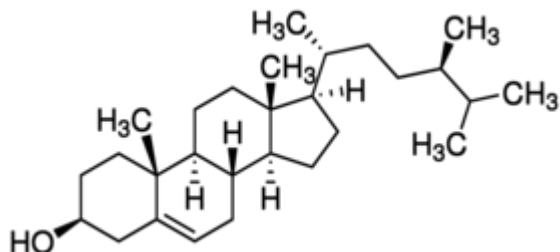


Campesterol 10 mg phyproof SUPELCO



Codice Articolo: PHL89514-10MG

Breve descrizione del prodotto:

Campesterol, phyproof Reference Substance

Informazioni aggiuntive:

- CAS Number: 474-62-4
- Molecular Formula: C₂₈H₄₈O
- Purity Grade: phyproof(R) Reference Substance
- URL Link: <https://www.sigmaaldrich.com/US/en/product/SUPELCO/PHL89514?context=product>
- Image
URL: https://www.sigmaaldrich.com/content/dam/sigma-aldrich/structure9/080/mfcd00010475.eps/_jcr_content/renditions/mfcd00010475-medium.png
- MSDS
Link: <https://www.sigmaaldrich.com/MSDS/MSDS/DisplayMSDSPage.do?country=DE&language=EN&productNumber=PHL89514&brand=SUPELCO>
- Molecular Weight: 400.68
- Shipped on ICE/no ICE: STD
- SAP Pack with Pack Qty: 1X10MG
- Storage Temperature: -2-8°C
- Prodotto padre: PHL89514-10MG