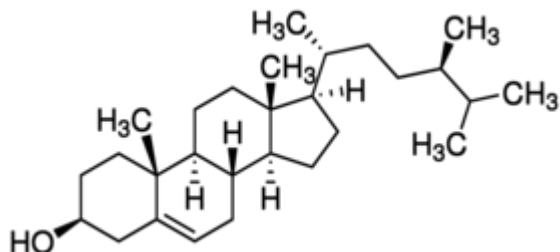


CAMPESTEROL 1 MG SIGMA



Codice Articolo: C5157-1MG

Breve descrizione del prodotto:

Campesterol, ~65%

Informazioni aggiuntive:

- CAS Number: 474-62-4
- Molecular Formula: C₂₈H₄₈O
- Purity Grade: ~65%
- URL Link: <https://www.sigmaaldrich.com/US/en/product/SIGMA/C5157?context=product>
- Image
URL: https://www.sigmaaldrich.com/content/dam/sigma-aldrich/structure9/080/mfcd00010475.eps/_jcr_content/renditions/mfcd00010475-medium.png
- MSDS
Link: <https://www.sigmaaldrich.com/MSDS/MSDS/DisplayMSDSPage.do?country=DE&language=EN&productNumber=C5157&brand=SIGMA>
- Molecular Weight: 400.68
- Shipped on ICE/no ICE: STD
- SAP Pack with Pack Qty: 1X1MG
- Storage Temperature: -20C
- Prodotto padre: C5157-1MG