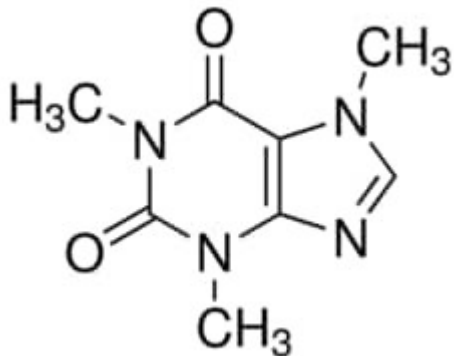


## CAFFEINE SOLUTION ANALYTICAL STANDARD 1 ml FLUKA



**Codice Articolo:** C6035-1ML

### Breve descrizione del prodotto:

Caffeine solution, analytical standard, 1.0 mg/mL in methanol

### Informazioni aggiuntive:

- CAS Number: 58-08-2
- Purity Grade: analytical standard, 1.0 mg/mL in methanol
- URL Link: <https://www.sigmaaldrich.com/US/en/product/SIAL/C6035?context=product>
- Image  
URL: [https://www.sigmaaldrich.com/content/dam/sigma-aldrich/structure9/194/mfcd00005758.eps/\\_jcr\\_content/renditions/mfcd00005758-medium.png](https://www.sigmaaldrich.com/content/dam/sigma-aldrich/structure9/194/mfcd00005758.eps/_jcr_content/renditions/mfcd00005758-medium.png)
- MSDS  
Link: <https://www.sigmaaldrich.com/MSDS/MSDS/DisplayMSDSPage.do?country=DE&language=EN&productNumber=C6035&brand=SIAL>
- Shipped on ICE/no ICE: STD
- SAP Pack with Pack Qty: 1X1ML
- Storage Temperature: -2-8°C
- Prodotto padre: C6035-1ML