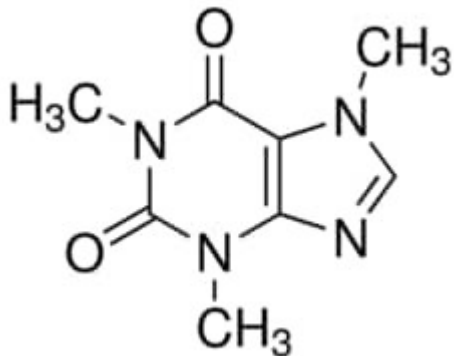


CAFFEINE POWDER REAGENTPLUS 1 KG Sigma



Codice Articolo: C0750-1KG

Breve descrizione del prodotto:

Caffeine, powder, ReagentPlus

Informazioni aggiuntive:

- CAS Number: 58-08-2
- Molecular Formula: C₈H₁₀N₄O₂
- Purity Grade: powder, ReagentPlus(R)
- URL Link: <https://www.sigmaaldrich.com/US/en/product/SIAL/C0750?context=product>
- Image
URL: https://www.sigmaaldrich.com/content/dam/sigma-aldrich/structure9/194/mfcd00005758.eps/_jcr_content/renditions/mfcd00005758-medium.png
- MSDS
Link: <https://www.sigmaaldrich.com/MSDS/MSDS/DisplayMSDSPage.do?country=DE&language=EN&productNumber=C0750&brand=SIAL>
- Molecular Weight: 194.19
- Shipped on ICE/no ICE: STD
- SAP Pack with Pack Qty: 1X1KG
- Prodotto padre: C0750-1KG