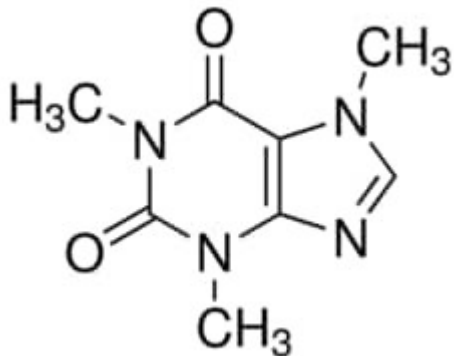


Caffeine certified reference material 1G TRaceCERT



Codice Articolo: 56396-100MG

Breve descrizione del prodotto:

Caffeine, certified reference material, TraceCERT, Manufactured by: Sigma-Aldrich Production GmbH, Switzerland

Informazioni aggiuntive:

- CAS Number: 58-08-2
- Molecular Formula: C₈H₁₀N₄O₂
- Purity Grade: certified reference material, TraceCERT(R)
- URL Link: <https://www.sigmaaldrich.com/US/en/product/SIAL/56396?context=product>
- Image
URL: https://www.sigmaaldrich.com/content/dam/sigma-aldrich/structure9/194/mfcd00005758.eps/_jcr_content/renditions/mfcd00005758-medium.png
- MSDS
Link: <https://www.sigmaaldrich.com/MSDS/MSDS/DisplayMSDSPage.do?country=DE&language=EN&productNumber=56396&brand=SIAL>
- Molecular Weight: 194.19
- Shipped on ICE/no ICE: STD
- SAP Pack with Pack Qty: 1X100MG
- Prodotto padre: 56396-100MG