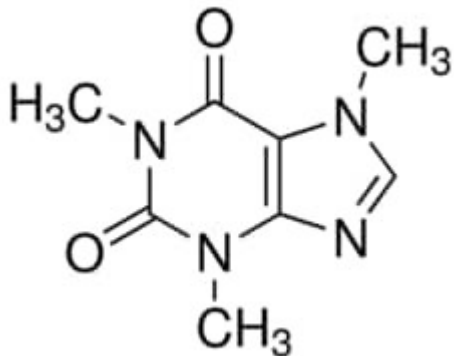


## Caffeine anhydrous 250 g Sigma-Aldrich



**Codice Articolo:** 27602-250G

### Breve descrizione del prodotto:

Caffeine, anhydrous, tested according to Ph. Eur.

### Informazioni aggiuntive:

- CAS Number: 58-08-2
- Molecular Formula: C<sub>8</sub>H<sub>10</sub>N<sub>4</sub>O<sub>2</sub>
- Purity Grade: anhydrous, tested according to Ph. Eur.
- URL Link: <https://www.sigmaaldrich.com/US/en/product/SIAL/27602?context=product>
- Image  
URL: [https://www.sigmaaldrich.com/content/dam/sigma-aldrich/structure9/194/mfcd00005758.eps/\\_jcr\\_content/renditions/mfcd00005758-medium.png](https://www.sigmaaldrich.com/content/dam/sigma-aldrich/structure9/194/mfcd00005758.eps/_jcr_content/renditions/mfcd00005758-medium.png)
- MSDS  
Link: <https://www.sigmaaldrich.com/MSDS/MSDS/DisplayMSDSPage.do?country=DE&language=EN&productNumber=27602&brand=SIAL>
- Molecular Weight: 194.19
- Shipped on ICE/no ICE: STD
- SAP Pack with Pack Qty: 1X250G
- Prodotto padre: 27602-250G