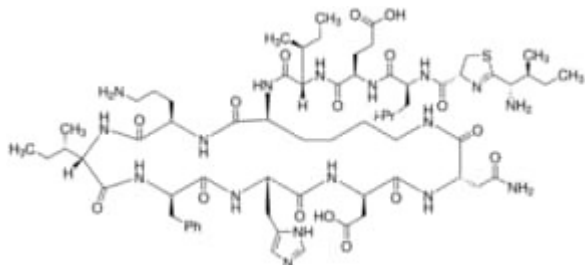


## Bacitracin A 25 MG Supelco



**Codice Articolo:** 31626-25MG

### Breve descrizione del prodotto:

Bacitracin A, VETRANAL, analytical standard, main stereoisomer ~50 %

### Informazioni aggiuntive:

- Molecular Formula: C<sub>66</sub>H<sub>13</sub>N<sub>17</sub>O<sub>16</sub>S
- Purity Grade: VETRANAL(R), analytical standard, main stereoisomer ~50 %
- URL Link: <https://www.sigmaaldrich.com/US/en/product/SIAL/31626?context=product>
- Image  
URL: [https://www.sigmaaldrich.com/content/dam/sigma-aldrich/structure4/104/f\\_\\_\\_\\_31626.eps/\\_jcr\\_content/renditions/f\\_\\_\\_\\_31626-medium.png](https://www.sigmaaldrich.com/content/dam/sigma-aldrich/structure4/104/f____31626.eps/_jcr_content/renditions/f____31626-medium.png)
- Molecular Weight: 1422.69
- Shipped on ICE/no ICE: STD
- SAP Pack with Pack Qty: 1X25MG
- Storage Temperature: -2-8°C
- Prodotto padre: 31626-25MG