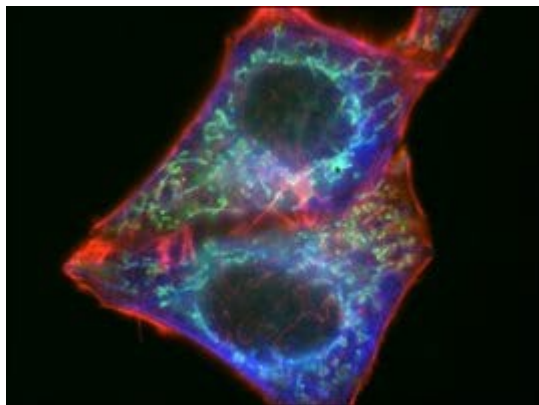


Anti-Rabbit IgG (H+L) 250 ul Sigma-Aldrich



Codice Articolo: SAB4600045-250U

Breve descrizione del prodotto:

Anti-Rabbit IgG (H+L), highly cross-adsorbed, CF™ 488A antibody produced in goat, ~2 mg/mL, affinity isolated antibody

Informazioni aggiuntive:

- Purity Grade: ~2 mg/mL, affinity isolated antibody
- URL Link: <https://www.sigmaaldrich.com/US/en/product/SIGMA/SAB4600045?context=product>
- Image
URL: https://www.sigmaaldrich.com/content/dam/sigma-aldrich/product9/087/sab4600023-icc.tif/_jcr_content/renditions/sab4600023-icc-medium.jpg
- Shipped on ICE/no ICE: DICE
- SAP Pack with Pack Qty: 1X250UL
- Storage Temperature: -20C
- Prodotto padre: SAB4600045-250U