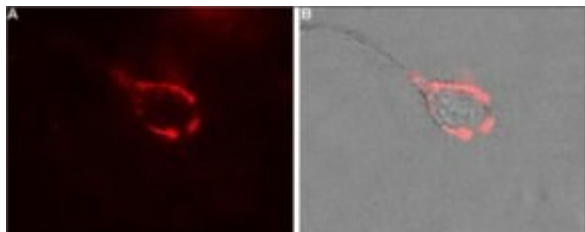


Anti-Calcium Channel ($\alpha_2/d-1$ Subunit) Sigma-Aldrich



Codice Articolo: C5105-.05ML

Breve descrizione del prodotto:

Anti-Calcium Channel ($\alpha_2/d-1$ Subunit) antibody produced in rabbit, affinity isolated antibody, lyophilized powder

Informazioni aggiuntive:

- Purity Grade: affinity isolated antibody, lyophilized powder
- URL Link: <https://www.sigmaaldrich.com/US/en/product/SIGMA/C5105?context=product>
- Image
URL: https://www.sigmaaldrich.com/content/dam/sigma-aldrich/product4/119/c5105-icc-1.tif/_jcr_content/renditions/c5105-icc-1-medium.jpg
- Shipped on ICE/no ICE: STD
- SAP Pack with Pack Qty: 1X.05ML
- Storage Temperature: -20C
- Prodotto padre: C5105-.05ML