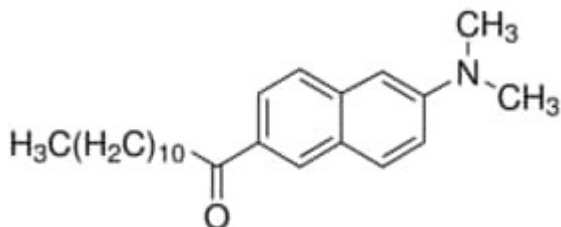


## 6-Dodecanoyl-N,N-dimethyl-2-100MG Sigma naphthylamie



**Codice Articolo:** 40227-100MG

### Breve descrizione del prodotto:

6-Dodecanoyl-N,N-dimethyl-2-naphthylamine, suitable for fluorescence,  $\geq 97.0\%$  (HPLC)

### Informazioni aggiuntive:

- CAS Number: 74515-25-6
- Molecular Formula: C<sub>24</sub>H<sub>35</sub>NO
- Purity Grade: suitable for fluorescence,  $\geq 97.0\%$  (HPLC)
- URL Link: <https://www.sigmaaldrich.com/US/en/product/SIGMA/40227?context=product>
- Image  
URL: [https://www.sigmaaldrich.com/content/dam/sigma-aldrich/structure0/134/mfcd00467560.eps/\\_jcr\\_content/renditions/mfcd00467560-medium.png](https://www.sigmaaldrich.com/content/dam/sigma-aldrich/structure0/134/mfcd00467560.eps/_jcr_content/renditions/mfcd00467560-medium.png)
- MSDS  
Link: <https://www.sigmaaldrich.com/MSDS/MSDS/DisplayMSDSPage.do?country=DE&language=EN&productNumber=40227&brand=SIGMA>
- Molecular Weight: 353.54
- Shipped on ICE/no ICE: STD
- SAP Pack with Pack Qty: 1X100MG
- Prodotto padre: 40227-100MG